

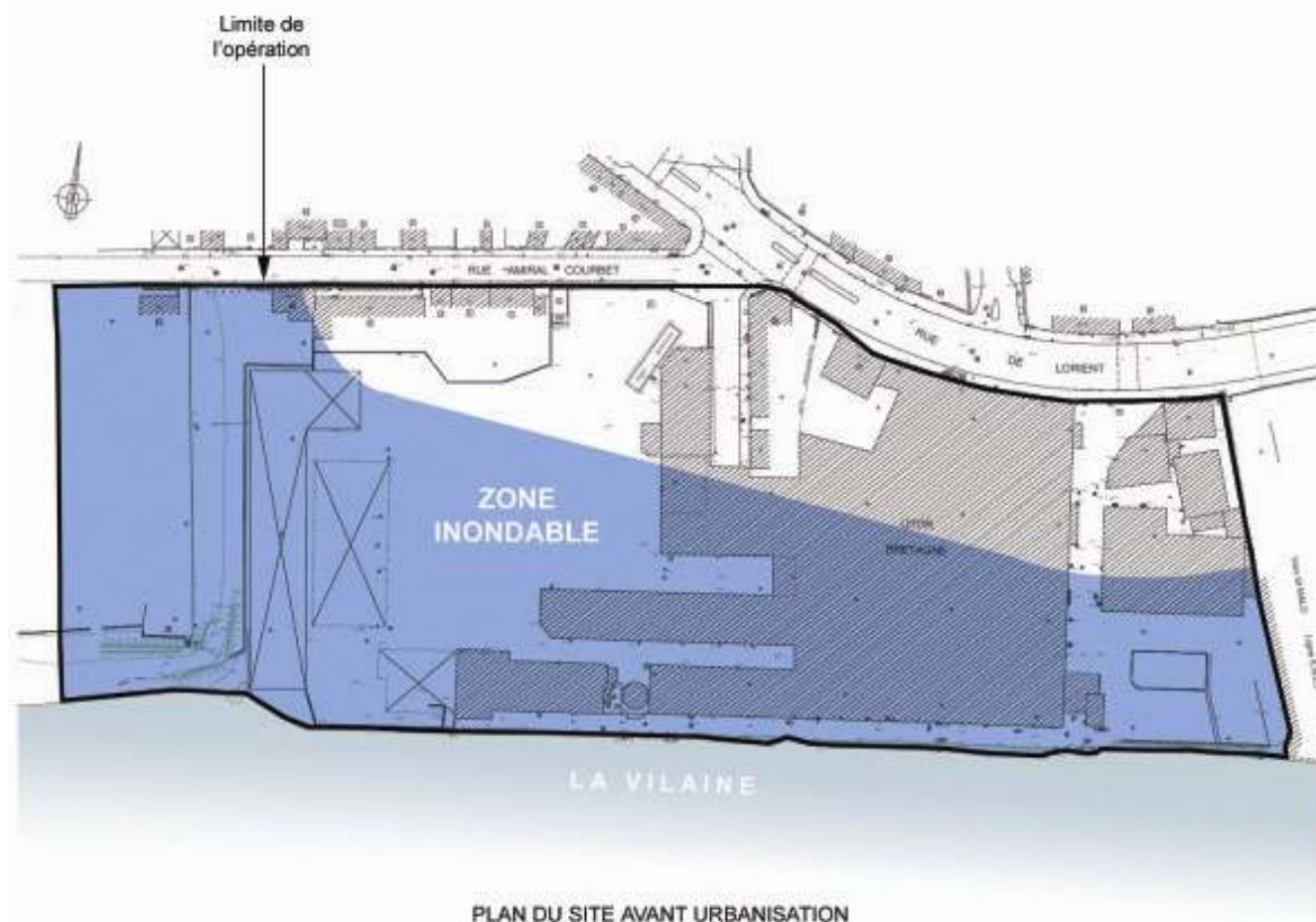


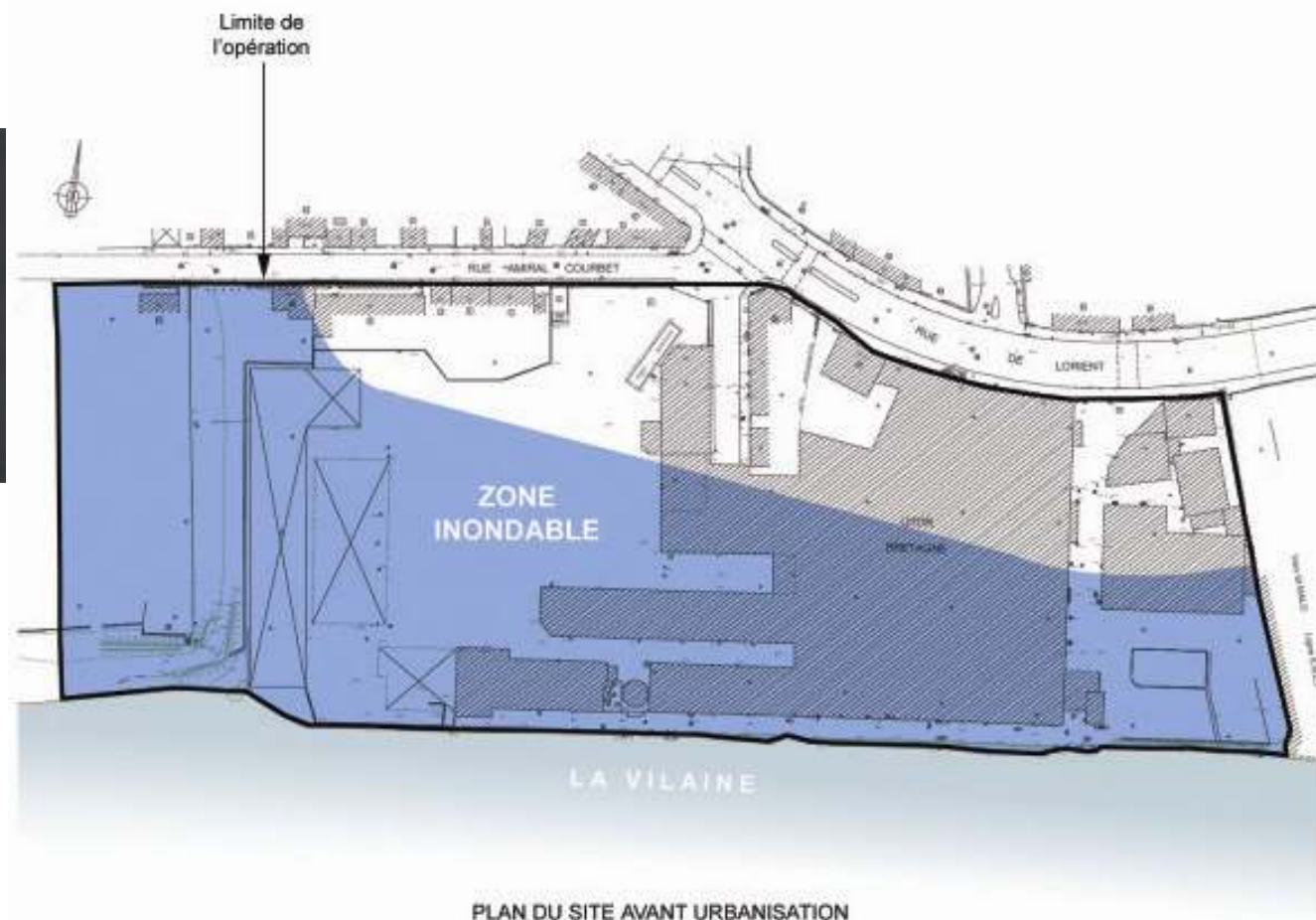
**« Un exemple de quartier résilient en
zone inondable : la ZAC des
Papeteries de Bretagne (Rennes) »**

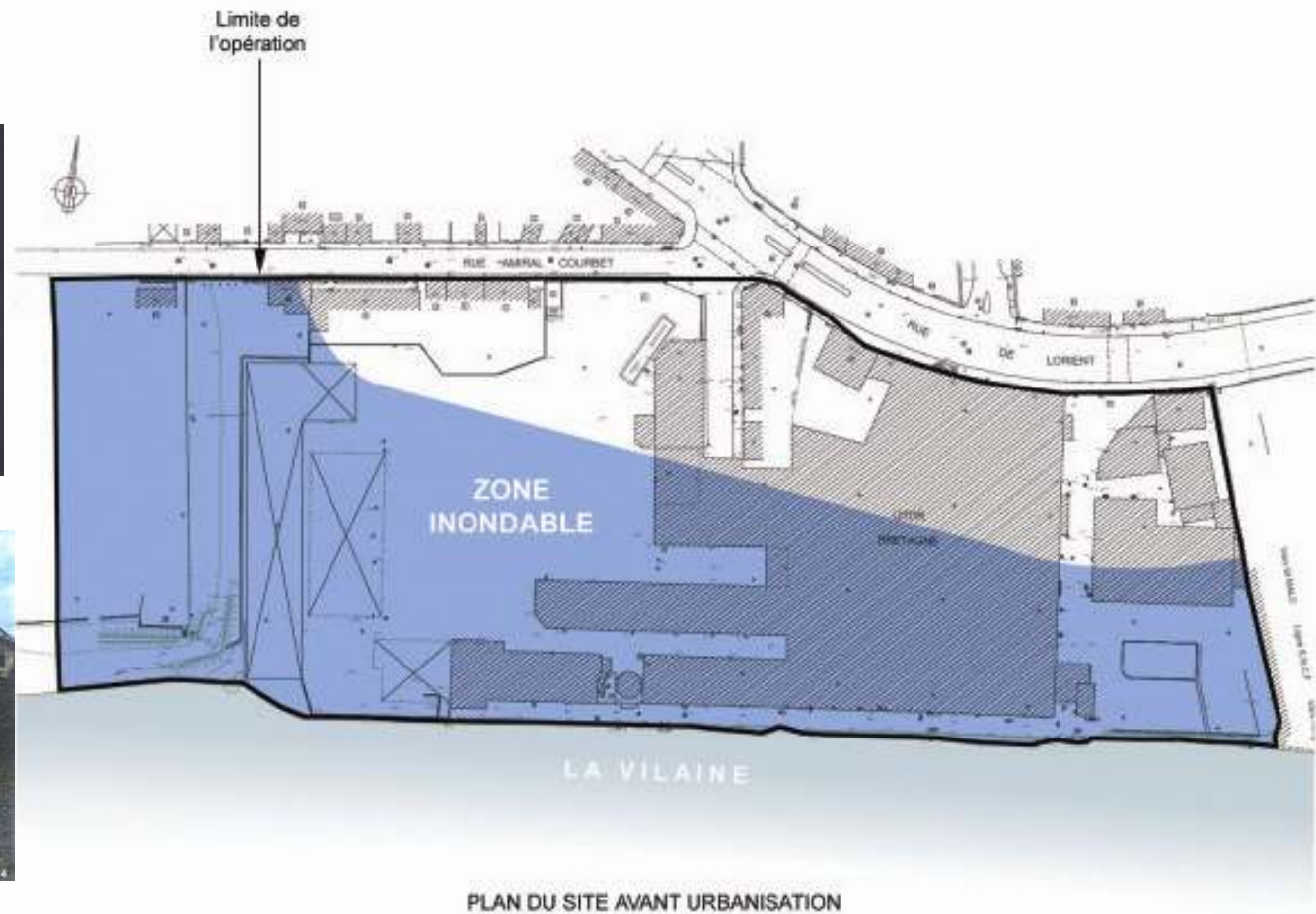
Jean-Yves BARRIER architecte

20 rue Albert Thomas 37000 Tours







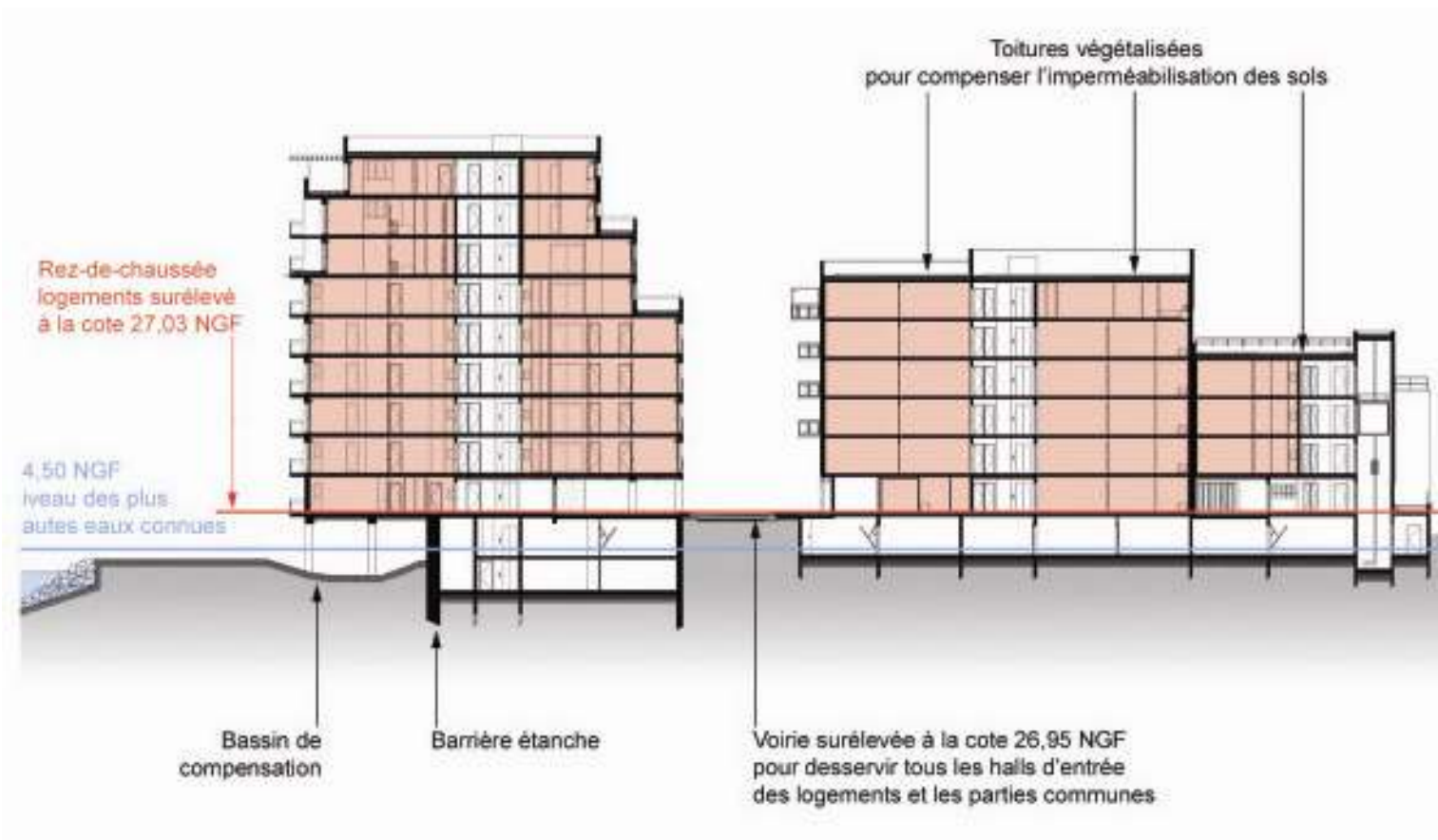


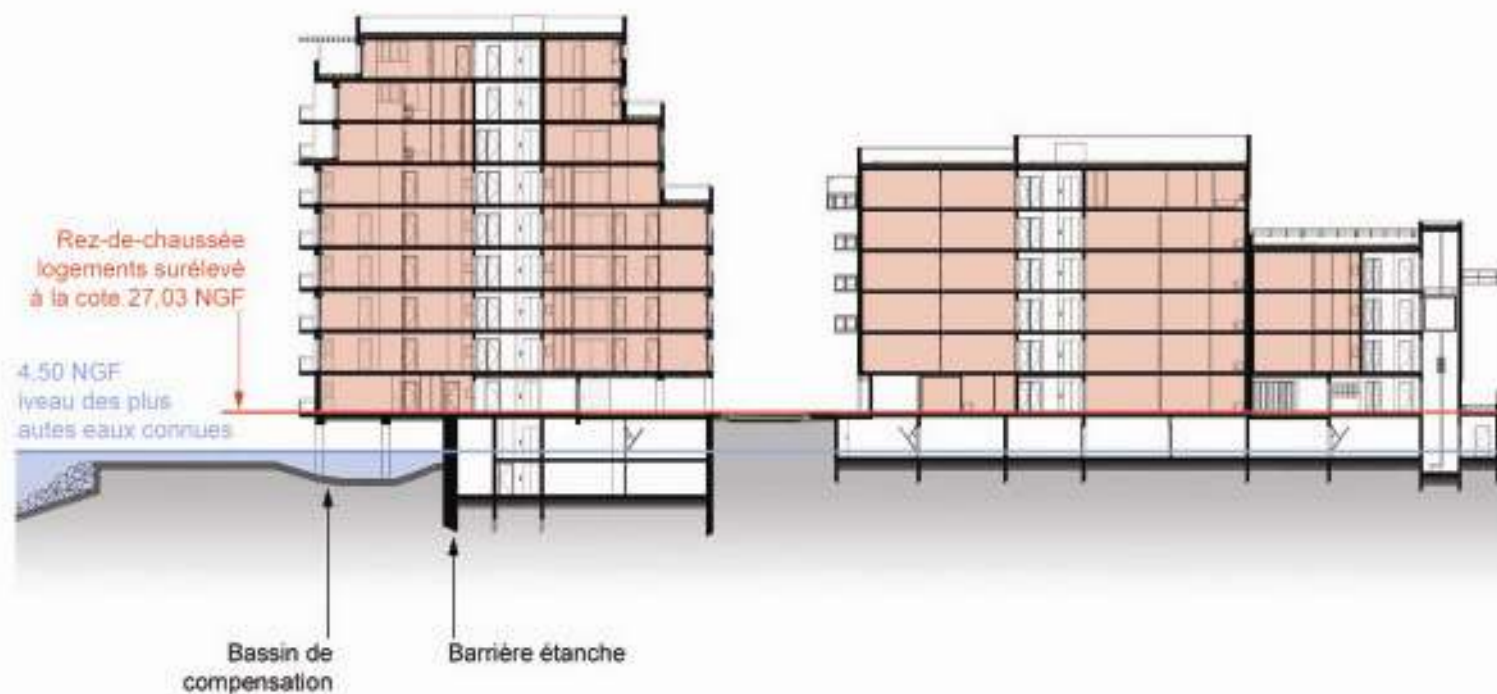












En cas de crue, l'effet combiné des bassins de compensation et de la paroi étanche du parking protège le site des inondations.







